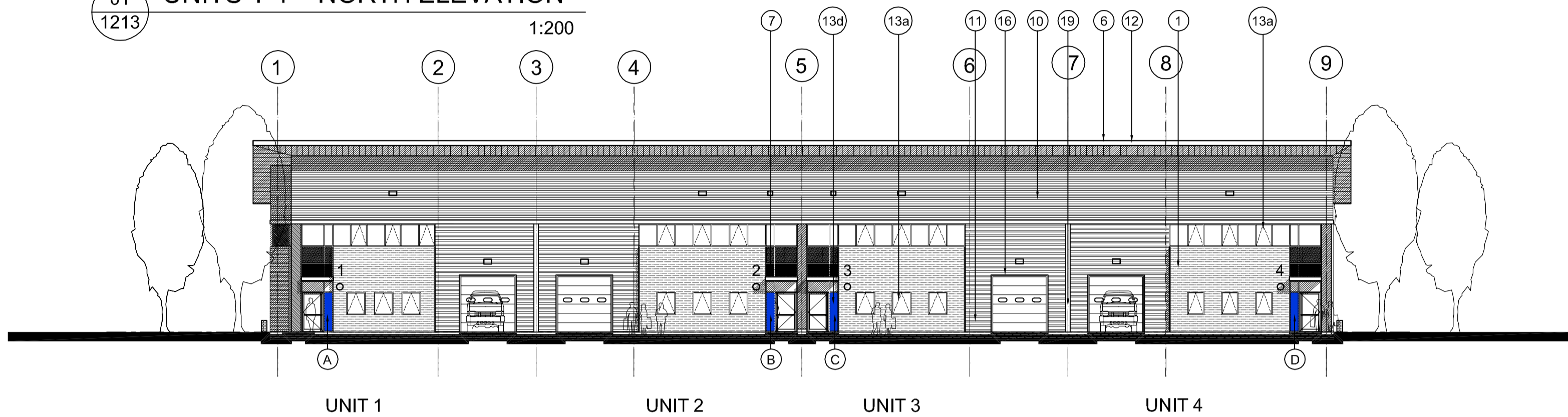
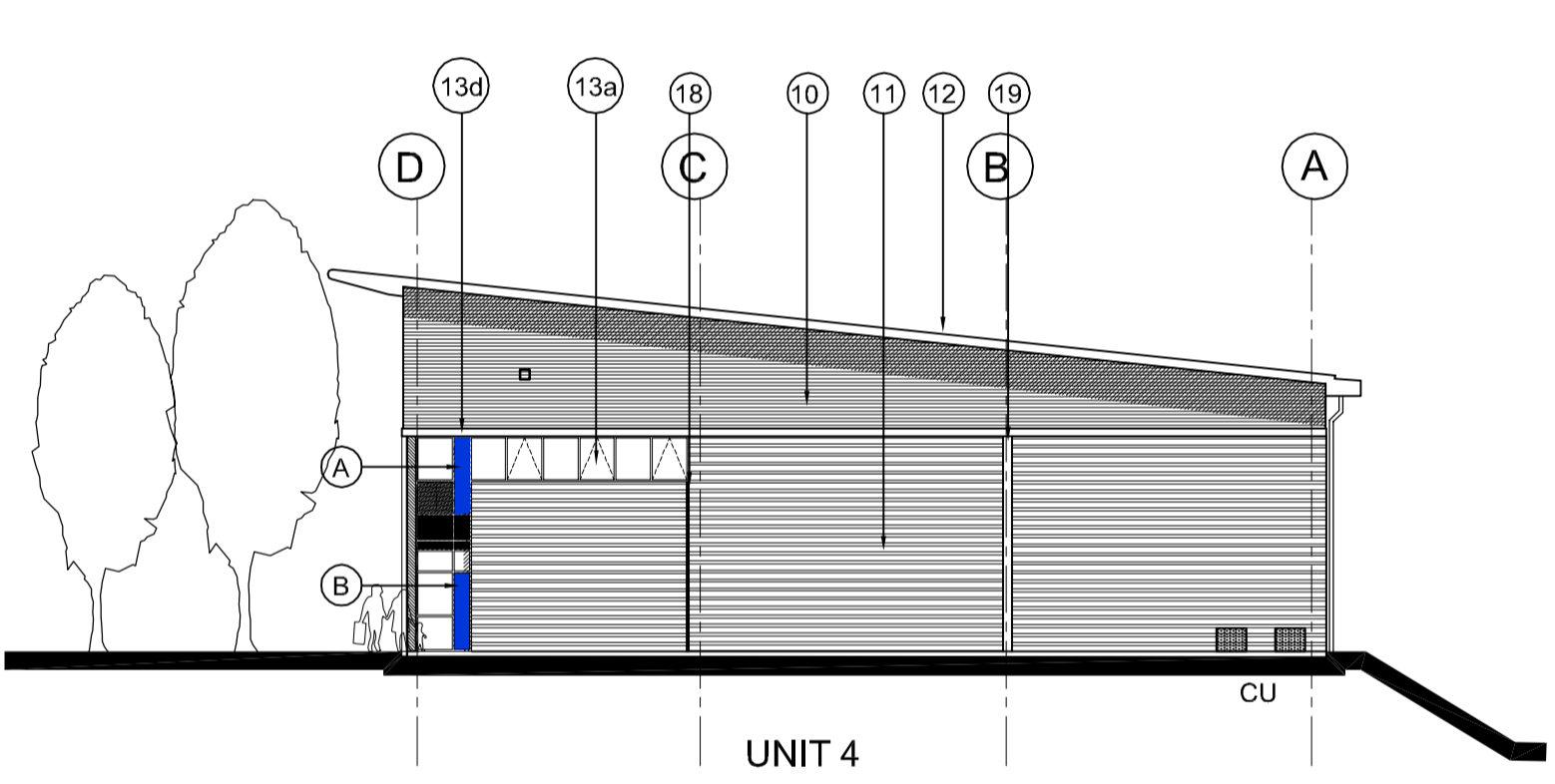


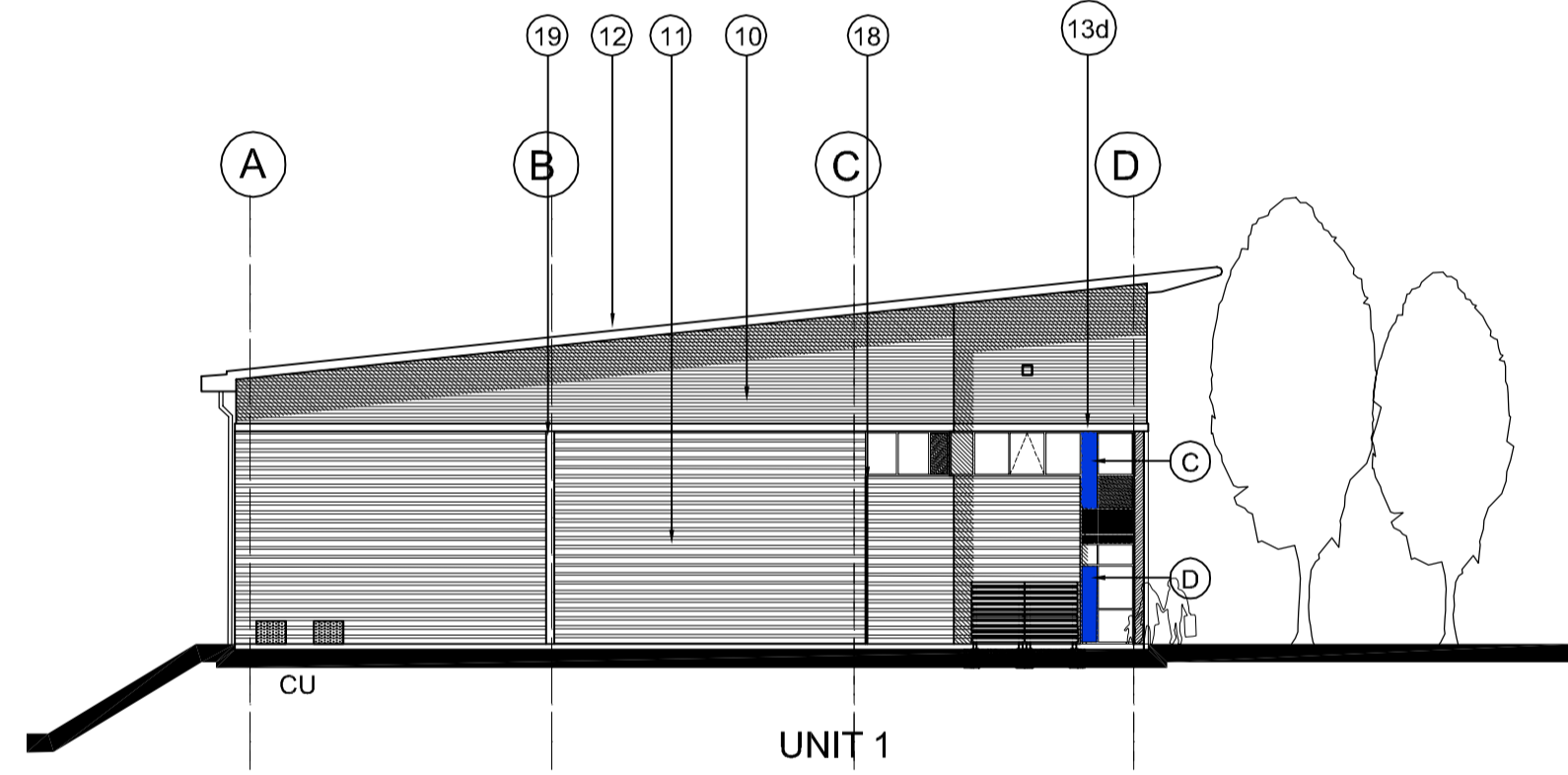
01 UNITS 1-4 NORTH ELEVATION
1213 1:200



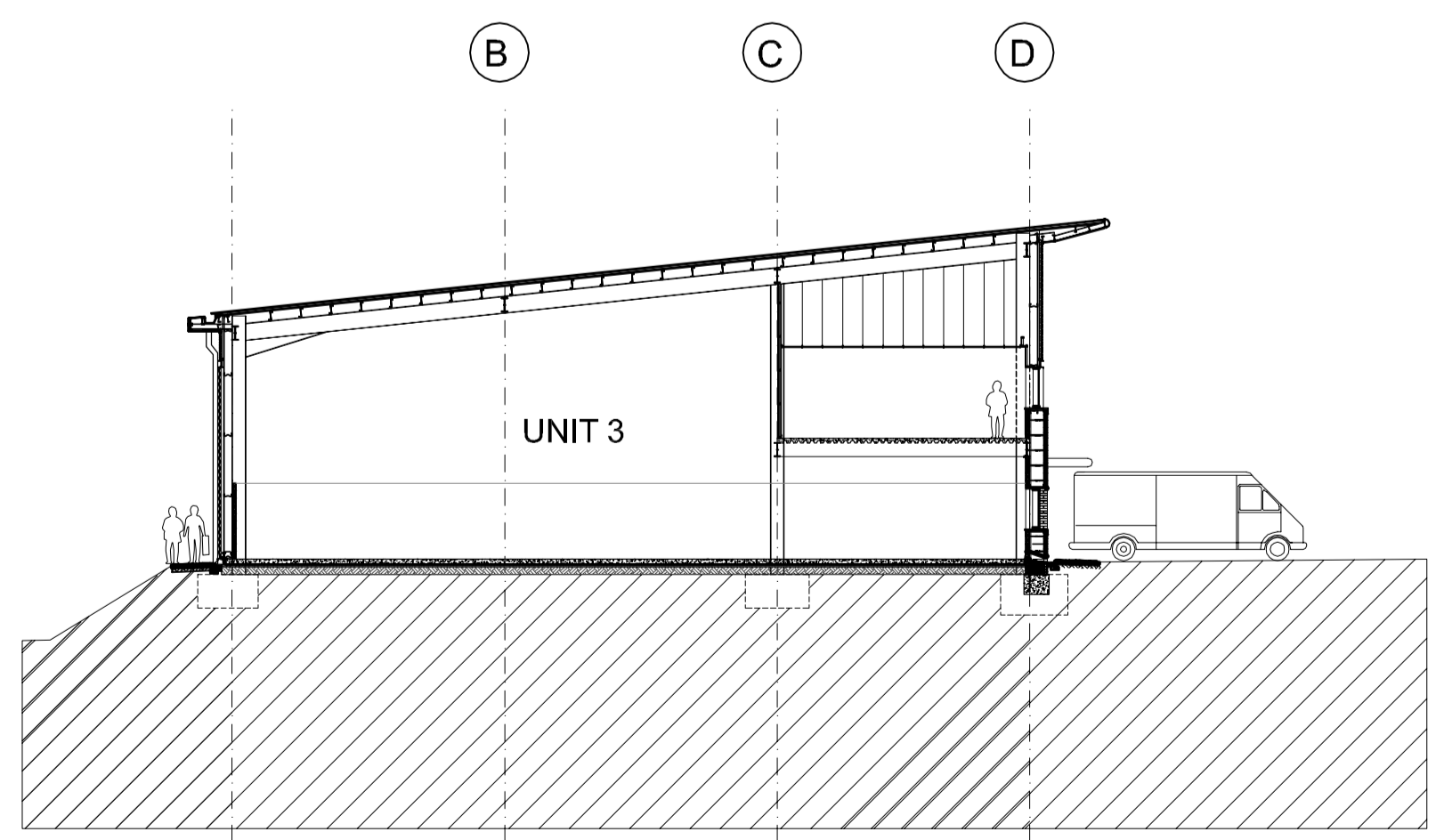
02 UNITS 1-4 SOUTH ELEVATION
1213 1:200



03 UNITS 1-4 EAST ELEVATION
1213 1:200



04 UNITS 1-4 WEST ELEVATION
1213 1:200



05 UNITS 1-4 SECTION
1213 1:200

SCHEDULE OF EXTERNAL FACING MATERIALS

INDUSTRIAL UNITS	
1 Facing Brick	Kingsbury Smooth Cream
6 Overhanging roof soffit and Fascia	Flat metal panels colour: Prisma Zeus metallic dark grey with recessed downlighters in soffit
7 Entrance Canopy	Flat metal panels colour: Prisma Zeus metallic dark grey with recessed downlighters in soffit
10 Profiled Wall Cladding	Horizontally laid sinusoidal profiled steel cladding Colour: Prisma Grey Aluminium RAL 9007
11 Profiled Wall Cladding	Horizontally laid half round profiled steel cladding Colour: Prisma Silver Metallic RAL 9006
12 Unit Roof	Fully Insulated composite roof panel Colour: HPS 200 Albatross Light Grey
13a Windows	Clear low E glass in polyester powder coated aluminium window system. Colour: RAL 7015 Charcoal grey
13b Windows	Laminated translucent glass in polyester powder coated aluminium window system. Colour: Charcoal grey RAL 7015
13c Windows	Laminated glass panels in polyester powder coated aluminium window system. Colour: Charcoal grey RAL 7015
13d Glazing	Laminated blue glass panels in polyester powder coated aluminium curtain walling system. Colour: Charcoal grey RAL 7015
14 Unit number	Stainless Steel numeral
15 High Level Horizontal Band	High Level Recessed Horizontal Feature Band Charcoal grey RAL 7015
16 Loading Doors	Stucco finished aluminium
17 Personnel/fire exit Doors	Coated steel doors Prisma Grey Aluminium
18 Joints	Vertical 'T' Flashing colour Charcoal grey RAL 7015
19 Joints	Recessed 300mm wide vertical flashing - colour Charcoal grey RAL 7015

- (A) 6.8mm VANCEVA LAMINATED BLUE GLASS TOUGHENED PANE - REF TRUE BLUE
16mm ARGON SPACER COMPRISING 90% ARGON
6mm CLEAR LOW E-GLASS TOUGHENED
- (B) 6.8mm VANCEVA LAMINATED BLUE GLASS TOUGHENED PANE - REF AQUAMARINE
16mm ARGON SPACER COMPRISING 90% ARGON
6mm CLEAR LOW E-GLASS TOUGHENED
- (C) 6.8mm VANCEVA LAMINATED BLUE GLASS TOUGHENED PANE - REF SAPPHIRE
16mm ARGON SPACER COMPRISING 90% ARGON
6mm CLEAR LOW E-GLASS TOUGHENED
- (D) 6.8mm VANCEVA LAMINATED BLUE GLASS TOUGHENED PANE - REF 6166
16mm ARGON SPACER COMPRISING 90% ARGON
6mm CLEAR LOW E-GLASS TOUGHENED

NOTES:

SUBJECT TO STATUTORY CONSENTS
 SUBJECT TO SURVEY
 BASED ON OS MAP REPRODUCED BY PERMISSION OF CONTROLLER OF HM STATIONARY OFFICE (c) CROWN COPYRIGHT
 COPYRIGHT RESERVED
 DO NOT SCALE THIS DRAWING
 DO NOT USE ELECTRONIC VERSIONS OF THIS DRAWING TO DETERMINE DIMENSIONS UNLESS SPECIFICALLY AUTHORISED BY MICHAEL SPARKS ASSOCIATES
 IF USING AN ELECTRONIC VERSION OF THIS DRAWING FIGURED DIMENSIONS TAKE PRECEDENCE AND NOTIFY MICHAEL SPARKS ASSOCIATES OF ANY DISCREPANCIES

ENSURE SEALING OF ALL JUNCTIONS TO COMPLY WITH PART L

U-values	NOTE:
Roof: 0.25	ROOF AND WALL CLADDING TO BE DESIGNED BY SPECIALIST CONTRACTOR.
Floors: 0.25	CLADDING DETAILS TO BE READ IN CONJUNCTION WITH THE SPECIFICATION AND ALL RELEVANT BRITISH STANDARDS.
Walls: 0.35	INCLUDE VAPOUR BARRIER TAPE AROUND ALL OPENINGS AND JUNCTIONS.
Glazing: 1.50	

ALL DIMENSIONS TO BE CHECKED ON SITE.
 STEEL COLUMN SIZES TO BE CONFIRMED AND TOLERANCES TO BE AGREED.

AS BUILT

THIS "AS-BUILT" DRAWING IS BASED ON INFORMATION SUPPLIED TO MICHAEL SPARKS ASSOCIATES BY MC LAREN CONSTRUCTION AND INCORPORATES INSTRUCTIONS AND OTHER DESIGN INFORMATION GIVEN TO MC LAREN CONSTRUCTION DIRECTLY BY OTHERS

REV	DATE	NOTE	DRAW	CHK
A	25.03.2009	Refer to sub-contractors drawings for specialist details This supercedes drawing no: 2716/RE/320 rev.G	JH	NSC



CHARTERED ARCHITECTS
 11 PLATO PLACE
 ST. BONS ROAD
 LONDON SW6 4TU
 TELEPHONE 020 7736 6162
 FAX 020 7736 3896
 www.msa-architects.co.uk

TITLE
CROSSWAYS, DARTFORD
 DRAWING
SCHOONER PARK UNITS 1-4
ELEVATIONS & SECTION
 CLIENT
FROGMORE

DATE	SCALE	DRAWN
MARCH 2009	1:200 @ A1	JH
	STATUS	CHECKED
	AS BUILT	NSC
DRAWING NUMBER		
2716 / AB / 1213A		